

# EARLS ASSOCIATES LIMITED



EARLS ASSOCIATES LIMITED

---

## *Company Profile*

**2020**

## **1.0 Background**

EARLS ASSOCIATES LIMITED is a modern private Limited Company formed by a strong team of highly qualified and skilled personnel in a bid to address Construction and Civil Works needs in the country and the region.

EARLS ASSOCIATES LIMITED was formed in line with government's economic policy of promoting a private oriented economic sector thereby interalia participating in reduction of poverty levels and increasing the purchasing power of the people of Uganda,

EARLS ASSOCIATES LIMITED started with a small number of clients and overtime, due to efficiency, our clientele has expanded to include large entities such as Non - Governmental Organisations(NGOs), Media Companies and variouys Government Bodies. You too can be part of the happy family that enjoys our quality and professional services.

## **2.0 Mission Statement**

Our guiding philosophy is "we lead and others follow"

All this can be achieved through providing quality, professional, communication and services to our clients with a smile and absolute due care.

Providing all construction and civil engineering solutions in time with minimum budget and also meeting the requirements by using accepted quality control processes.

Ensuring our clients get a responsive service towards their needs.

## **2.1 Objectives**

Major objective is to improve efficiency and effectiveness in service delivery by:

- Drawing various plans to meet your architectuaral needs.
- Planning of construction sites.
- Execution of planned construction and civil works on site.
- Construction of roads.
- Construction of Bridges.

## **2.2 Our Vision**

To be a leading firm in construction and civil works industry to always appropriately and satisfactorily meets the needs of our clients.

## **2.3 Location**

**EARLS ASSOCIATES LIMITED** is located at;

Plot 400, Balintuma Road, Nakulabye.

Address: P.O BOx 9894, Kampala

Tel: +256 778 966187 / +256 705 559748

Email: earlsassociatesltd@gmail.com

### **3.0 Resources**

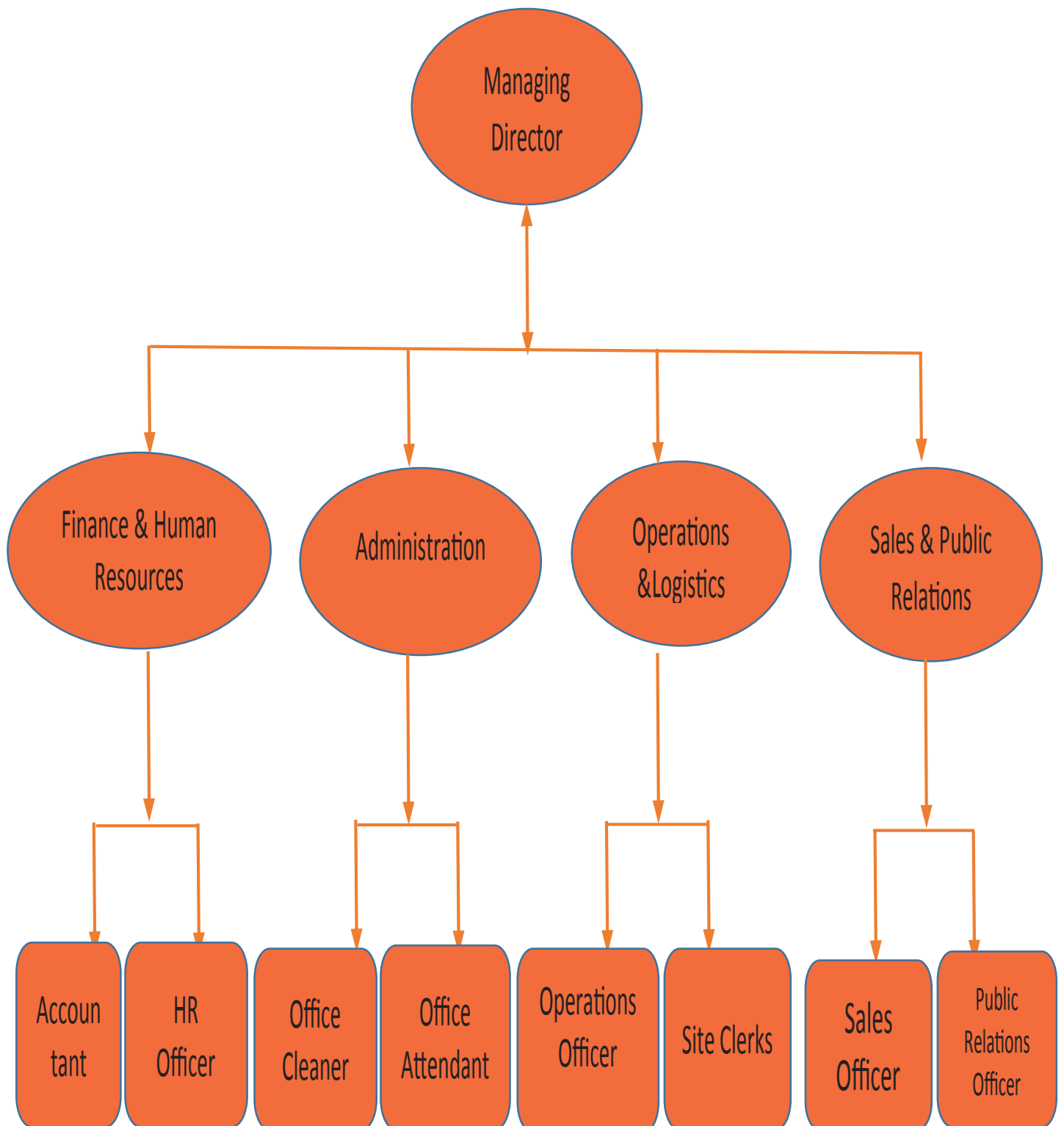
#### **Machinery**

We have skilled man power and relevant machinery that enable us to produce quality work and delivery services on time.

- *Concrete Mixers*
- *Murum Vibrator*
- *Concrete Breakers*
- *Wheel Loaders*
- *Material Lifters*
- *Pressure Rollers*
- *Lorries*
- *Concrete Vibrators*
- *Excavators*

We undertake to provide quality work with safety and utmost professionalism.

### 3.1 Organisation Structure



## 4.0 Work Done by Earls Associated Limited



***One of the Projects  
from the government of  
Uganda contracted by us***

***A road Project in Ntoroko  
District worth  
1.17 Billion Shillings***



#### **4.0 Work Done by Earls Associated Limited**



***A road under construction by our company***



***An excavator at a site in Ntoroko***



#### **4.0 Work Done by Earls Associated Limited**



***A bridge culvert constructed by our company***



***A road under construction by our company***



#### **4.0 Work Done by Earls Associated Limited**



***A water way being constructed***



***Road works underway on site***



#### **4.0 Work Done by Earls Associated Limited**



***Road works under inspection by our qualified engineers***



***Stone works done for water way***



#### **4.0 Work Done by Earls Associated Limited**



***Heavy equipment being used at a construction site.***



## 4.0 Work Done by Earls Associated Limited



***Our qualified engineers working on Ntoroko Road***

### **3.0 Work Done by Earls Associated Limited**



***Exterior view of finished Remmings Hotel works done by our company.***



### **3.0 Work Done by Earls Associated Limited**



***Rear view of finished Remmings Hotel works done by our company.***



### **3.0 Work Done by Earls Associated Limited**



***Finished Remmings Hotel constructed by  
Earls Associates Limited  
in 2019 worth 4 Billion Shillings***

### **3.0 Work Done by Earls Associated Limited**



***Subcontracts done  
from SAED Technical  
Services by  
Earls Associates  
on  
Ojanai Bridge in Amuria***



#### **4.0 Work Done by Earls Associated Limited**



***Ojanai Bridge under construction.***



#### **4.0 Work Done by Earls Associated Limited**



*Ojanai Bridge under construction.*





**4.0 Work Done by Earls Associated Limited**



***Water flowing through Ajonai Bridge***



#### **4.0 Work Done by Earls Associated Limited**



***Water flowing through Ajonai Bridge***





#### **4.0 Work Done by Earls Associated Limited**



***An Excavator doing road works***



***Trucks working on a road site***



#### **4.0 Work Done by Earls Associated Limited**



***Trucks working on a road site***



#### **4.0 Work Done by Earls Associated Limited**



***Heavy Equipment working on a road site***



#### **4.0 Work Done by Earls Associated Limited**



***Skilled Personnel on site***



#### **4.0 Work Done by Earls Associated Limited**



***Skilled Personel on site***